

NNHLA

National Non-Hodgkin Lymphoma Audit

NNHLA, Clinical Effectiveness Unit

Royal College of Surgeons of England
38-43 Lincoln's Inn Fields
London WC2A 3PE

E: NHLaudit@rcseng.ac.uk

T: 020 73044787

NNHLA_NATCAN

NNHLA Newsletter, November 2024

Want to find out more?

The NNHLA is part of the National Cancer Audit Collaborating Centre (NATCAN). If you want to find out more about NATCAN visit our [new website](#). If you would like to receive regular updates send us an email NATCAN@rcseng.ac.uk

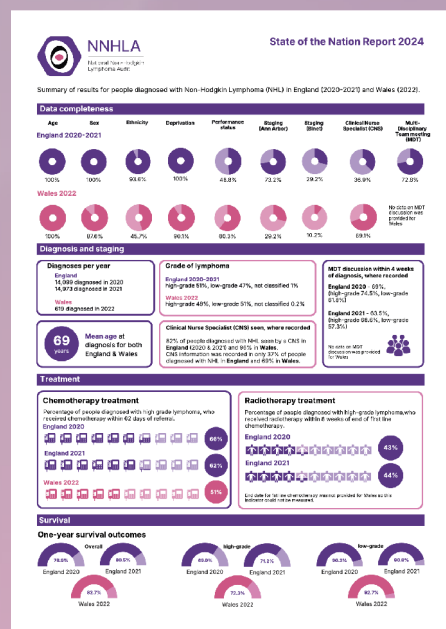
State of the Nation Report 2024 & Supplementary materials

In September we were delighted to publish our first [State of the Nation Report](#); along with a number of supplementary materials, including the following: [Infographic](#) (pictured right), Data Tables, Data Viewer, Methodology Supplement, Quality Improvement Action Plan Template and a Glossary.

The recommendations within the Report, highlight where improvements are needed.

The audit has also produced a [Patient and Public version of the State of the Nation Report](#); which was developed in close collaboration with our Patient and Public Involvement (PPI) Forum members and in discussion with our charity partners.

We note our gratitude to everyone that contributed to the development of these key outputs for the audit.



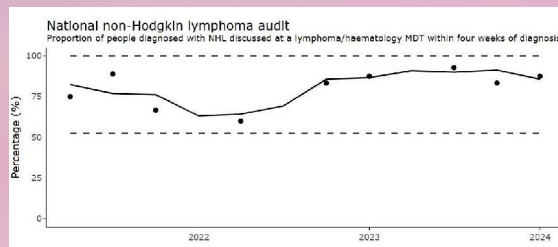
Quarterly Clinical Performance Indicator Report released

Last month we published our first [Quarterly Performance Indicator Report](#). This encompasses the period April 2021 to March 2024.

This is the first report which alongside reporting data, now includes performance indicators (which are detailed in our Quality Improvement Plan) and is presented as an interactive dashboard.

We encourage all provider teams to review their data completeness and make improvements as required. This will increase the number of people diagnosed with NHL that we can include in analyses and increase the range of analyses we can conduct.

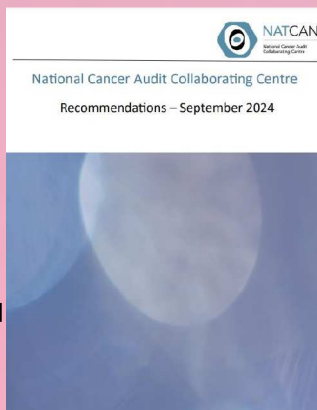
Please email the NNHLA mailbox (NHLaudit@rcseng.ac.uk) if you have any questions.



NATCAN Webinar Event - Link available

In October, NATCAN held its first webinar to explore the key findings arising from the State of the Nation reports produced by its new cancer audits (including NNHLA).

A recording of the event and a summary document of the recommendations can be found [here](#).



Blood Cancer UK release new report

Blood Cancer UK have recently published their Action Plan Report. Helen Rowntree, Chief Executive notes that the report "hopes to improve the outcomes for people living with blood cancer and those who will be diagnosed in the future".

Access the report [here](#).



This email was sent to you by NNHLA part of NATCAN, Royal College of Surgeons of England, 38-43 Lincoln's Inn Fields, London WC2A. To ensure continued receipt of our emails please add us to your address book or safe list. In accordance with the General Data Protection Regulation (GDPR), we are committed to protecting your privacy. If you wish to know more please access the NATCAN privacy policy. If you wish to unsubscribe from all NNHLA email communications please click [here](#). © RCSEng 2023, Registered Charity No. 212808