


# NPACA

National Pancreatic  
Cancer Audit

NPACA, Clinical Effectiveness Unit

Royal College of Surgeons of England  
38-43 Lincoln's Inn Fields  
London WC2A 3PE

E: [PancreaticCancerAudit@rcseng.ac.uk](mailto:PancreaticCancerAudit@rcseng.ac.uk)  
T: 020 73044787

 [NPACA\\_NATCAN](https://twitter.com/NPaCA_NATCAN)

## NPACA Newsletter, November 2024

### Want to hear more?

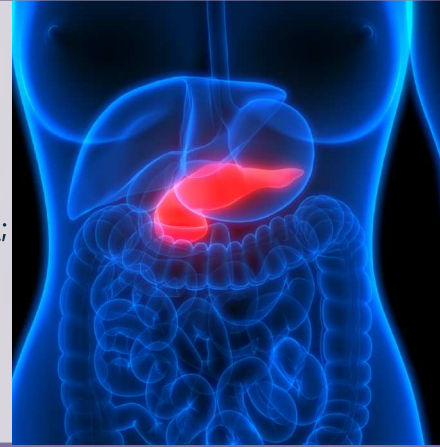
Please feel free to forward this newsletter to colleagues who are involved in pancreatic cancer care. If you were forwarded this email and would like to be added to our mailing list, please email [us](mailto:us).

#### State of the Nation Report 2024

In September we were delighted to publish our first [State of the Nation Report](#); along with a number of supplementary materials, including the following: Data Tables, Data Viewer, Methodology Supplement, Quality Improvement Action Plan Template and a Glossary.

The recommendations within the Report, highlight where improvements are needed. The audit has also produced a [Patient and Public version of the State of the Nation Report](#); which was developed in close collaboration with our Patient and Public Involvement (PPI) Forum members and in discussion with our charity partners.

We note our gratitude to everyone that contributed to the development of these key outputs for the audit.



#### Quarterly Clinical Performance Indicator Report released

Last month we published our first [Quarterly Clinical Performance Indicator Report](#). For the first time, alongside reporting data, we are now including performance indicators.

The performance indicators are detailed in our [Quality Improvement Plan 2024](#).

November is Pancreatic Cancer Awareness Month! Follow our contributions on X, via our page, [@NPACA\\_NATCAN](https://twitter.com/NPaCA_NATCAN).



#### Pancreatic Cancer UK (PCUK) presentation

Members of the NPACA project team, were delighted to accept an invitation from [Pancreatic Cancer UK \(PCUK\)](#), to deliver a session at their recent Optimal Care Pathway meeting. This was held in Birmingham, on the 30th of October.

The meeting provided an important opportunity for members of the audit team to share key findings arising from the State of the Nation report.

Find out more about PCUK's Optimal Care Pathway Initiative [here](#).



#### Panpals Pancreas Patient Group open 'The Teale Room'



Karen Stead (pictured far right), is a key member of NPACA's Patient and Public Involvement (PPI) Forum and is a survivor of pancreatic cancer. She is also an active campaigner in raising awareness of this condition.

Karen and other members of the [Panpals Pancreas Patient Group](#), have recently undertaken a project to refurbish a room at [St James's University Hospital](#) in Leeds.

Karen explains,

"We wanted to refurbish a previously, cold and uninviting room at the Hospital, into a calm and comfortable space for 'difficult conversations' between patients and Consultants.

This involved discussions with [Leeds Teaching Hospitals NHS Trust](#) and the [Leeds Hospitals Charity](#) and took 10 months to complete.

The room refurbishment cost £5,000 and was funded by donations from friends and from collections from the funerals of those who sadly lost their lives to pancreatic cancer.

We chose some lovely prints of Yorkshire scenes and of a local waterfall.

We decided to name the room, 'The Teale room', after Marcelle Teale, who is incredibly friendly and helpful and is Secretary to Mr Andrew Smith (Co-Clinical Lead for NPACA) (pictured)".

Our congratulations to Karen and to everyone involved in creating this lovely space!



(Images kindly provided by the LTHT medical illustration).



This email was sent to you by NPACA, part of NATCAN, Royal College of Surgeons of England. To ensure continued receipt of our emails please add us to your address book or safe list. In accordance with the General Data Protection Regulation (GDPR), we are committed to protecting your privacy. If you wish to know more please access the NATCAN privacy policy. If you wish to unsubscribe from all NPACA communications, please click [here](#). © RCS 2023, Registered Charity No. 2128