



# NKCA

National Kidney Cancer Audit

NKCA, Clinical Effectiveness Unit

Royal College of Surgeons of England  
38-43 Lincoln's Inn Fields  
London WC2A 3PE

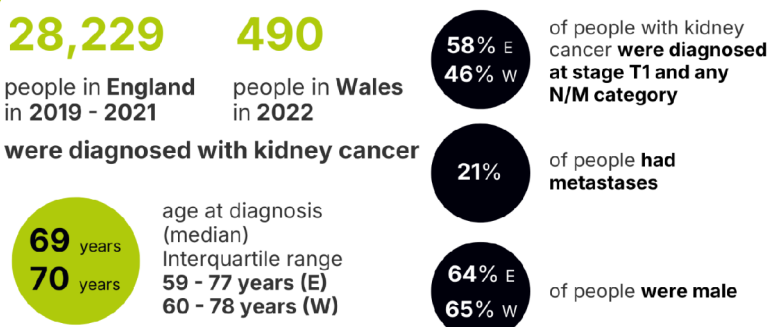
E: [KidneyCancerAudit@rcseng.ac.uk](mailto:KidneyCancerAudit@rcseng.ac.uk)  
X: [NKCA\\_NATCAN](https://twitter.com/NKCA_NATCAN)

## NKCA Newsletter, November 2024

### Want to hear more?

The NKCA is part of the **National Cancer Audit Collaborating Centre (NATCAN)**. If you want to **find out more about NATCAN** visit our [website](#). If you would like to **receive regular updates** send us an email [NATCAN@rcseng.ac.uk](mailto:NATCAN@rcseng.ac.uk)

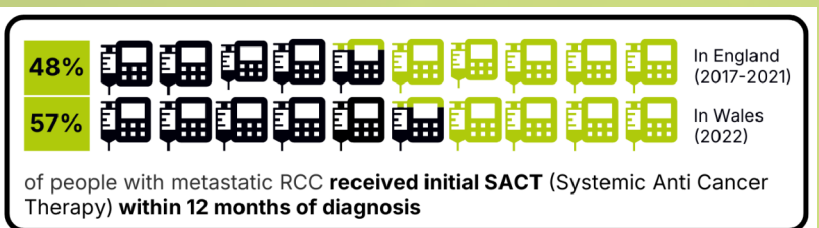
### State of the Nation Report



On 12th September 2024, the NKCA published their **first State of the Nation report**. It includes people diagnosed with kidney cancer between **January 2017 to December 2021 in England**, and **January 2022 to December 2022 in Wales**. It reports on **eight performance indicators for England** and **four for Wales** using routinely collected data.

The aim of this report is to help NHS organisations to **benchmark their kidney cancer care** against measurable standards, to **identify unwarranted variation** in measures of processes and outcomes, and to **describe national levels and patterns** of these measures in England and Wales. Findings in the report lead to **five recommendations to drive improvements** in the quality of kidney cancer care.

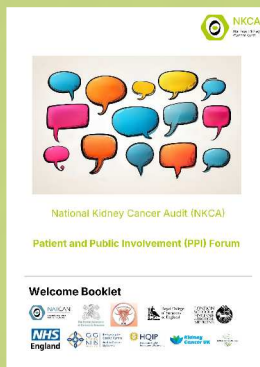
One of these was "Ensure people diagnosed with metastatic RCC (renal cell carcinoma) are evaluated by a medical/clinical oncologist with expertise in renal cancer management and receive systemic anti-cancer therapy (SACT).



### PPI Forum

Our **first PPI Forum** meeting was held on Friday 5th September 2024 where Raghav Varma, NKCA clinical fellow, presented the **findings from the NKCA State of the Nation (SotN)** and Emily Mayne, NKCA Data Scientist, reviewed the latest findings from our **quarterly report**.

Participants shared their **reactions** to the report, asked **questions** and provided **valuable feedback** for the development of the **NKCA SotN Patient and Public Report**, published on 25th October 2024.



### Quality Improvement Plan published

The NKCA Quality Improvement (QI) Plan sets out the **scope, care pathway, five improvement goals** and **ten initial performance indicators** for the NKCA.

The five QI goals are:

1. To increase regional equity in timely access to evidence-based kidney cancer services
2. To increase the use of renal tumour biopsy
3. To expedite treatment for patients with localized RCC at potentially high risk for recurrence (cT3+, 10cm+, cN1 tumours)
4. To increase use of surgery, if medically appropriate, for initially localised RCC at high risk of progression, while reducing the use of unnecessary radical surgery for low-risk RCC
5. To increase use of evidence based SACT treatment in eligible patients without increasing severe toxicity